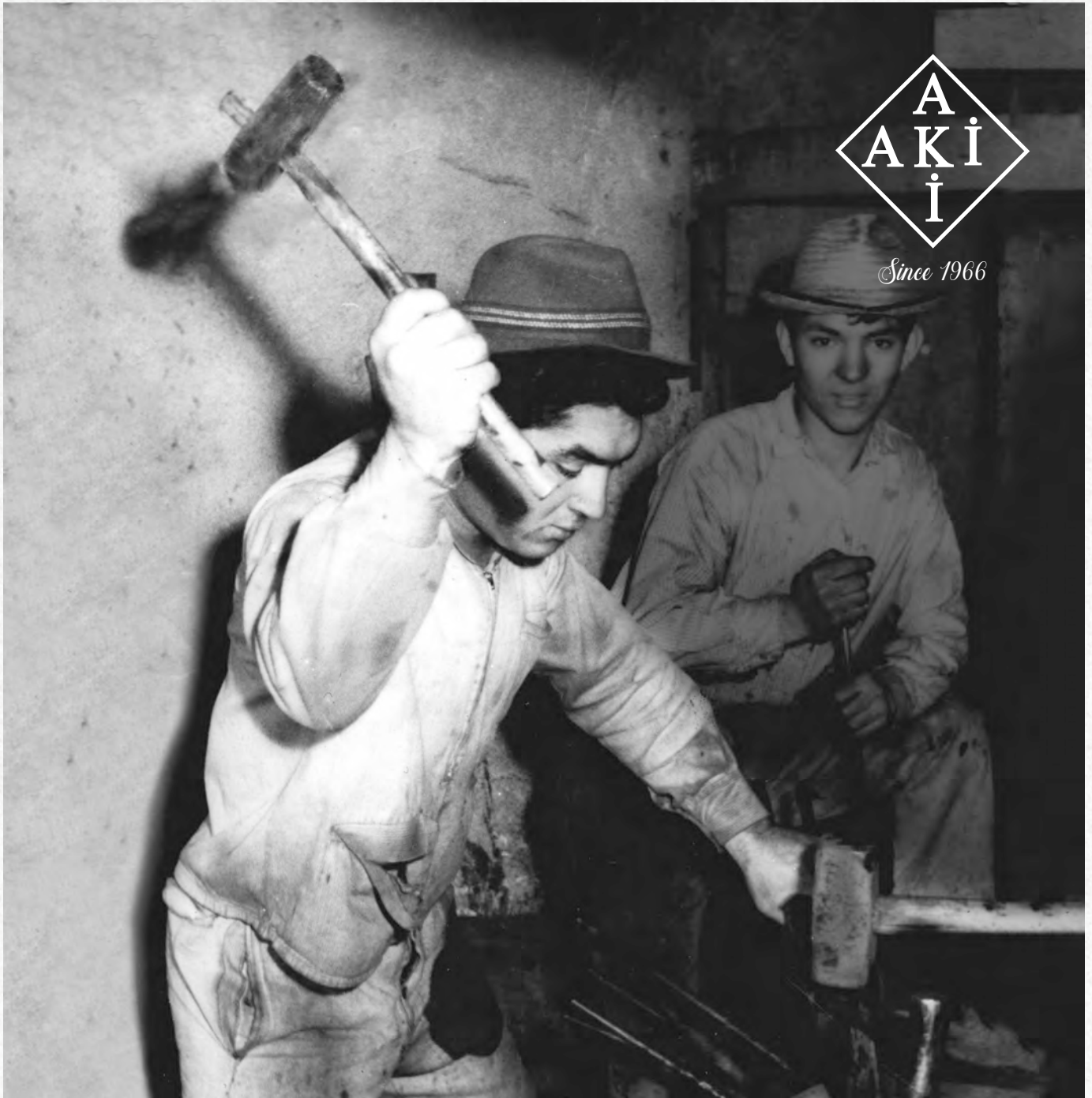


# PRODUCT CATALOG



*Since 1966*



AKI ÇELİK is one of the leading and well known forged steel hand tools manufacturer in Turkish domestic market; which is established by Mr. Halil AKI, in the year 1966 as a small blacksmith shop at beginning.

Besides we have been serving to ironmongery & workshop markets with high quality forging hand tools; also we are proud of serving to Turkish Military Forces, Ministry of Government Forestry and Mining with high quality striking tools and metal equipments.

Professional and qualified teamworkers, nice and sincere customer relations and focus to requests of customers has been brought our success in this duration.

As a result of expanding market rates; products of Aki brand reaches to hundreds of retail ironmongery and workshops by huge distributor wholesale network in all region of Türkiye.

We always have principle of best quality with best price and %100 customer satisfaction.

It will be our pleasure to serve you with our standard stocks and different custom made solutions for any of your hardware hand tools requirements, to hold strong relations with customers as more than business.



**TÜRK STANDARLARI ENSTİTÜSÜ**  
**TÜRK STANDARLARINA UYGUNLUK BELGESİ**  
**TURKISH STANDARDS INSTITUTION**  
**CERTIFICATE OF CONFORMITY TO TURKISH STANDARDS**

**Markanın Tanımı** Description of the Mark  
**TSE** **TSE** **TS 47 03**

BELGE NO/SAYISI REFERENCE NUMBER OF LICENSE	1.36.14.01012
BELGENİN İLİ VEYELERİ TARHI DATE OF FIRST ISSUE OF LICENSE	13/03/2016
BELGENİN SON GEÇERLİLİK TARHI EXPIRY DATE	13/03/2018
BELGE SAHİBİ FİRMANIN ADI NAME OF THE LICENSE HOLDER	AKİ ÇELİK SANAYİ VE TİCARET LİMİTED ŞİRKETİ
BELGE SAHİBİ FİRMANIN ADRESİ ADDRESS OF THE LICENSE HOLDER	İZMİR ARAPLITI YAKAĞI DENİZ ÇELİK YERLEMLERİ - DENİZLİ / TÜRKİYE
İŞLETİM YERİNİN ADI NAME OF THE MANUFACTURER	AKİ ÇELİK SANAYİ VE TİCARET LİMİTED ŞİRKETİ
İŞLETİM YERİNİN ADRESİ ADDRESS OF THE MANUFACTURER	İZMİR ARAPLITI YAKAĞI DENİZ ÇELİK YERLEMLERİ DENİZLİ / TÜRKİYE
İFTİHA EDİLEN BELGENİN NUMARASI (MARKA) INDICATION OF SUPPLEMENTED LICENSE (IF ANY)	YOKTUR
TEKNOLOJİK YERİNİN ADI RELATED TURKISH STANDARD	TS 22837 A 1019

**BELGE KAPSAMI :**  
 - AKİ ÇELİK  
 - AKİ ÇELİK

**İmza:**  
 Ahmet EKİNCİ  
 Denetim Çiğdem Belgeleme Müdürü

\*Sertifika sahibi ile diğer "Türk Standartları Belgesi" için 03 282 20 00 00 adresine başvurularına katılmalarıdır.  
 \*The holder, application should, under certain conditions, be subject to the approval of the institution.  
 \*Sertifika sahibi ile diğer "Türk Standartları Belgesi" için 03 282 20 00 00 adresine başvurularına katılmalarıdır.  
 \*The holder, application should, under certain conditions, be subject to the approval of the institution.

**TÜRK STANDARLARI ENSTİTÜSÜ**  
**TÜRK STANDARLARINA UYGUNLUK BELGESİ**  
**TURKISH STANDARDS INSTITUTION**  
**CERTIFICATE OF CONFORMITY TO TURKISH STANDARDS**

**Markanın Tanımı** Description of the Mark  
**TSE** **TSE** **TS 47 03**

BELGE NO/SAYISI REFERENCE NUMBER OF LICENSE	1.36.14.01011
BELGENİN İLİ VEYELERİ TARHI DATE OF FIRST ISSUE OF LICENSE	13/03/2016
BELGENİN SON GEÇERLİLİK TARHI EXPIRY DATE	13/03/2018
BELGE SAHİBİ FİRMANIN ADI NAME OF THE LICENSE HOLDER	AKİ ÇELİK SANAYİ VE TİCARET LİMİTED ŞİRKETİ
BELGE SAHİBİ FİRMANIN ADRESİ ADDRESS OF THE LICENSE HOLDER	İZMİR ARAPLITI YAKAĞI DENİZ ÇELİK YERLEMLERİ - DENİZLİ / TÜRKİYE
İŞLETİM YERİNİN ADI NAME OF THE MANUFACTURER	AKİ ÇELİK SANAYİ VE TİCARET LİMİTED ŞİRKETİ
İŞLETİM YERİNİN ADRESİ ADDRESS OF THE MANUFACTURER	İZMİR ARAPLITI YAKAĞI DENİZ ÇELİK YERLEMLERİ DENİZLİ / TÜRKİYE
İFTİHA EDİLEN BELGENİN NUMARASI (MARKA) INDICATION OF SUPPLEMENTED LICENSE (IF ANY)	YOKTUR
TEKNOLOJİK YERİNİN ADI RELATED TURKISH STANDARD	TS 45 8 1019

**BELGE KAPSAMI :**  
 - AKİ ÇELİK 2.5

**İmza:**  
 Ahmet EKİNCİ  
 Denetim Çiğdem Belgeleme Müdürü

\*Sertifika sahibi ile diğer "Türk Standartları Belgesi" için 03 282 20 00 00 adresine başvurularına katılmalarıdır.  
 \*The holder, application should, under certain conditions, be subject to the approval of the institution.  
 \*Sertifika sahibi ile diğer "Türk Standartları Belgesi" için 03 282 20 00 00 adresine başvurularına katılmalarıdır.  
 \*The holder, application should, under certain conditions, be subject to the approval of the institution.

**ANİCERT BELGELENDİRME A.Ş.**  
**ANİCERT**

**ISO 10002**  
**ANİCERT**

**SERTİFİKA**  
 Yürürlüğe giren belgedir.

**AKİ ÇELİK SANAYİ VE TİCARET LİMİTED ŞİRKETİ**  
 Kayalar Hacıyüplü Köyü No:10-A  
 MERKEZFENİ/DENİZLİ

Kuruluşunun:

**ÇELİK EL ALETLERİ İMALATI HİZMETLERİ**

Kapsamında:  
**ISO 10002 : 2014**  
**Müşteri Memnuniyeti Yönetim Sistemi**

Anıcert Belgelendirme A.Ş. tarafından gerçekleştirilen ve publisite amaçlı olarak gerçekleştirilen sertifikasyon, kurumun bu alandaki performansını göstermektedir. Sertifikasyonun geçerliliği, kuruluşun bu alandaki faaliyetlerinin performansını göstermektedir. Sertifikasyonun geçerliliği, kuruluşun bu alandaki faaliyetlerinin performansını göstermektedir.

İlk Belgelendirme Tarihi: 29.08.2016 Belgeli Yürüm Tarihi: 29.08.2019 Belgeli Gecelemler Tarihi: 28.08.2020 Sertifikasyon Numarası: 1945586686

**ANİCERT BELGELENDİRME A.Ş.**  
**YÖNETİM KURULU BAŞKANI**

**ISO 10002**

\*Sertifika sahibi ile diğer "Türk Standartları Belgesi" için 03 282 20 00 00 adresine başvurularına katılmalarıdır.  
 \*The holder, application should, under certain conditions, be subject to the approval of the institution.  
 \*Sertifika sahibi ile diğer "Türk Standartları Belgesi" için 03 282 20 00 00 adresine başvurularına katılmalarıdır.  
 \*The holder, application should, under certain conditions, be subject to the approval of the institution.



**CONSTRUCTION & STRIKING TOOLS**

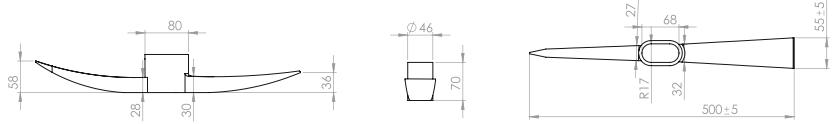




### OVAL SOCKET PICKAXE



› Long life durability mattocks; made by high grade alloy steel and extra hardened with hot forging and cementation after heat treatment.



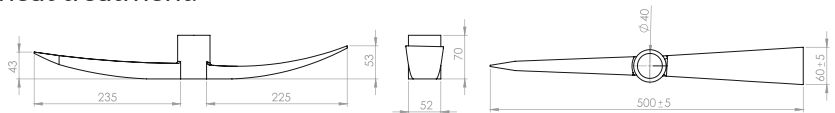
CODE	PRODUCT	WEIGHT	LENGTH	MATERIAL
CS101	OVAL SOCKET PICKAXE	2500 g	500 mm	STEEL-C50K



### ROUND SOCKET PICKAXE



› Long life durability mattocks; made by high grade alloy steel and extra hardened with hot forging and cementation after heat treatment.



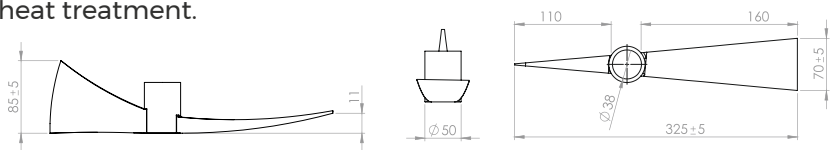
CODE	PRODUCT	WEIGHT	LENGTH	MATERIAL
CS102	ROUND SOCKET PICKAXE	2500 g	500 mm	STEEL-C50K



### HATCHET PICKAXE



› Long life durability mattocks; made by high grade alloy steel and extra hardened with hot forging and cementation after heat treatment.



CODE	PRODUCT	LENGTH	MATERIAL
CS103	HATCHET PICKAXE	325 mm	STEEL-C50K

### FLAT CHISEL & POINT CHISEL



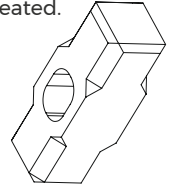
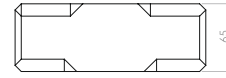
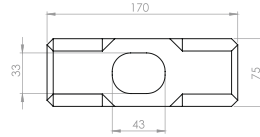
CODE	PRODUCT	DIAMETER	MATERIAL
CS104-1	FLAT	Ø 18 mm	STEEL-C50K
CS104-2	POINT	Ø 18 mm	STEEL-C50K



## SLEDGE HAMMER



- › Whole sides` hot forged sledgehammers provides` very strong and comfortable strike on heavy duties` wth` extra hardened tp` surfaces.
- › Made by hgh` grade carbon alloyed steel.Hand forged head, heat treated. Extra hardened grnded` tps.` Long life wth` hgh` durability.



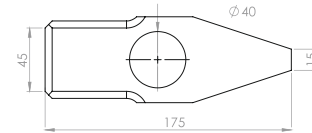
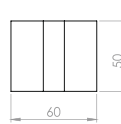
CODE	PRODUCT	WEIGHT	MATERIAL
CS105	SLEDGE HAMMER	3 - 10 kg	STEEL-C50K



## POINTED SLEDGE HAMMER



- › Whole sides` hot forged sledgehammers provides` very strong and comfortable strike on heavy duties` wth` extra hardened tp` surfaces.
- › Made by hgh` grade carbon alloyed steel.Hand forged head, heat treated. Extra hardened grnded` tps.` Long life wth` hgh` durability.



CODE	PRODUCT	WEIGHT	MATERIAL
CS106	POINTED SLEDGE HAMMER	3 - 10 kg	STEEL-C50K



Hexagonal

## SPLITTING WRECKING BAR



- › Durable and ergonomic` wreckng` bars madden by rolled hexagonal 1050 (C50K) steel sticks.
- › Both tps` are hardened wth` heat treated & hand forngn` after induction.

CODE	PRODUCT	LENGTH/mm	DIAMETER	MATERIAL
CS107-1	WRECKING BAR	600 mm	Ø 19 mm	STEEL-C50K
CS107-2	WRECKING BAR	800 mm	Ø 19 mm	STEEL-C50K
CS107-3	WRECKING BAR	1000 mm	Ø 22 mm	STEEL-C50K
CS107-4	WRECKING BAR	1200 mm	Ø 22 mm	STEEL-C50K
CS107-5	WRECKING BAR	1400 mm	Ø 22 mm	STEEL-C50K
CS107-6	WRECKING BAR	1600 mm	Ø 22 mm	STEEL-C50K

## FLAT CROWBAR



Flat

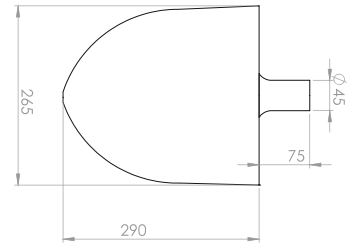
CODE	PRODUCT	LENGTH/mm	SIZE	MATERIAL
CS108-1	FLAT CROWBAR	500 mm	12 * 25 mm	STEEL-C50K
CS108-2	FLAT CROWBAR	600 mm	12 * 25 mm	STEEL-C50K



## FLAT SHOVEL



› High quality and durable steel shovels, hardened tips with heat treated.



**CODE**  
CS109

**PRODUCT**  
FLAT SHOVEL

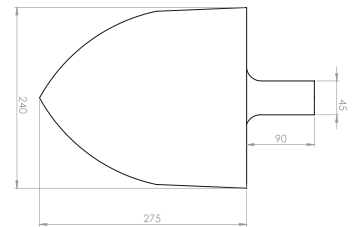
**MATERIAL**  
STEEL PLATE



## POINT DIGGER SHOVEL



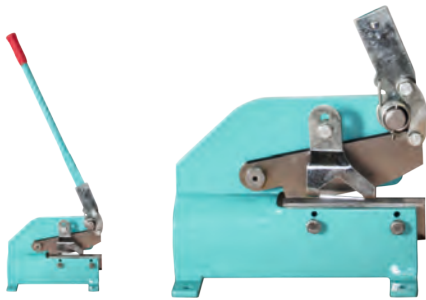
› High quality and durable steel shovels, hardened tips with heat treated.



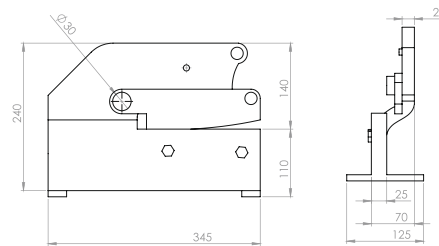
**CODE**  
CS110

**PRODUCT**  
POINT DIGGER SHOVEL

**MATERIAL**  
STEEL PLATE



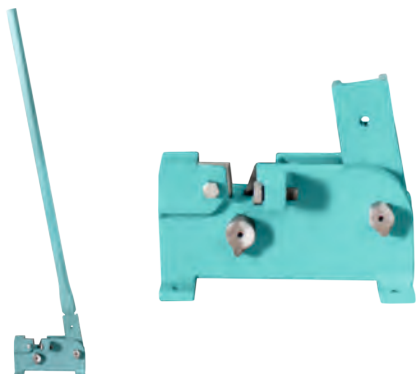
## METAL PLATE SHEAR



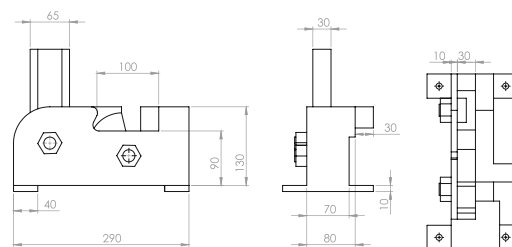
**CODE**  
CS111

**PRODUCT**  
METAL PLATE SHEAR

**MATERIAL**  
STEEL



## IRON STICK SHEAR



**CODE**  
CS112

**PRODUCT**  
IRON STICK SHEAR

**MATERIAL**  
STEEL



## HAMMERS & ADZES







### HAMMER WITH WOOD HANDLE



- › High grade steel hammers made by rolled 1050(C50K) steel hardened by grinding and cementation, provides you long term usage with high durability.
- › Ergonomic wood handles in different length according to the weight of hammer.

CODE	PRODUCT	WEIGHT	HANDLE	MATERIAL
HA113-1	HAMMER	300 g	BEECHWOOD / ASHWOOD	STEEL-C50K
HA113-2	HAMMER	500 g	BEECHWOOD / ASHWOOD	STEEL-C50K
HA113-3	HAMMER	1000 g	BEECHWOOD / ASHWOOD	STEEL-C50K
HA113-4	HAMMER	1500 g	BEECHWOOD / ASHWOOD	STEEL-C50K
HA113-5	HAMMER	2000 g	BEECHWOOD / ASHWOOD	STEEL-C50K



### HAMMER WITH FIBERGLASS HANDLE



- › High grade metal hammers made by rolled 1050 steel hardened by grinding and cementation, provides you long term usage with high durability.
- › Ergonomic fiberglass handles in different length according to the weight of hammer.

CODE	PRODUCT	WEIGHT	HANDLE	MATERIAL
HA114-1	HAMMER	300 g	FIBERGLASS	STEEL-C50K
HA114-2	HAMMER	500 g	FIBERGLASS	STEEL-C50K
HA114-3	HAMMER	1000 g	FIBERGLASS	STEEL-C50K
HA114-4	HAMMER	1500 g	FIBERGLASS	STEEL-C50K
HA114-5	HAMMER	2000 g	FIBERGLASS	STEEL-C50K



## SCYTHE HAMMER



- › Scythe hammer with 2 cross peen sides for smoothing and sharpening scythes on scythe anvils.
- › Made from high quality alloyed steel and carefully heat treated and forged.



### CODE

HA115

### PRODUCT

SCYTHE HAMMER

### MATERIAL

STEEL-C50K



## CLAW HAMMER



- › Claw hammer provides easier work for carpenters and masonry.
- › Heat treated and forged to best durability



### CODE

HA116

### PRODUCT

CLAW HAMMER

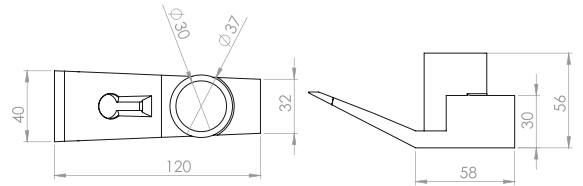
### MATERIAL

STEEL-C50K

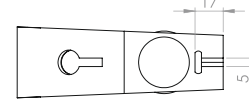
## ADZE WITH MAGNET



- › Nail holder magnet for pointing with one hand without holding the nail on unreachable places.



- › Heat treated and drop forged. Extra hardened with cementation.

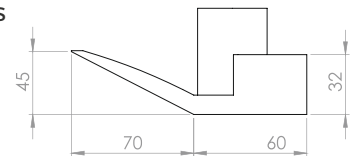


CODE	PRODUCT	SIZE	MATERIAL
HA117-1	ADZE WITH MAGNET	MEDIUM	STEEL-C50K
HA117-2	ADZE WITH MAGNET	LARGE	STEEL-C50K

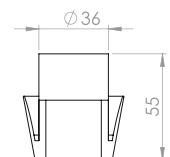
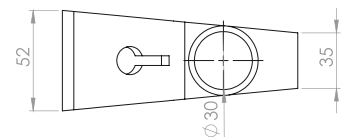
## STRAIGHT ADZE



- › High grade alloyed steel adze, provides multifunctional usage with grinded sharp front side to do wood carving, hole to rip off nails and hammer back side to strike nails.



- › Heat treated and drop forged. Extra hardened with cementation.



CODE	PRODUCT	SIZE	MATERIAL
HA118-1	STRAIGHT ADZE	MEDIUM	STEEL-C50K
HA118-2	STRAIGHT ADZE	LARGE	STEEL-C50K

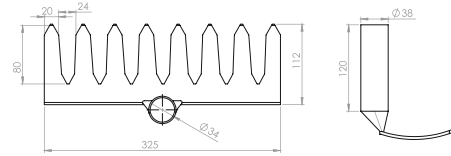


**GARDEN & AGRICULTURAL TOOLS**





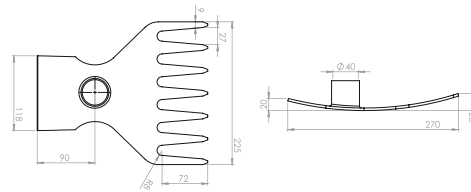
### 8 - 10 TOOTHED RAKE



CODE	PRODUCT	MODEL	MATERIAL
GA119-1	RAKE	8 TEETH	STEEL
GA119-2	RAKE	10 TEETH	STEEL



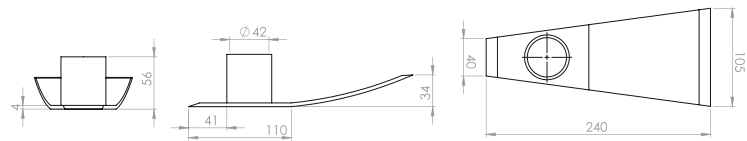
### RAKE WITH HOE



CODE	PRODUCT	MATERIAL
GA120	RAKE WITH HOE	STEEL



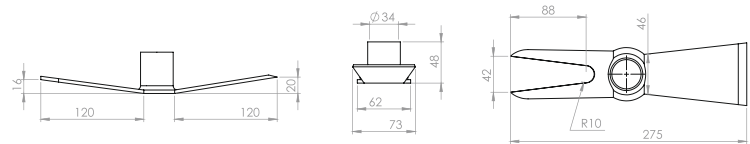
### GARDEN HOE



CODE	PRODUCT	MATERIAL
GA121	GARDEN HOE	STEEL



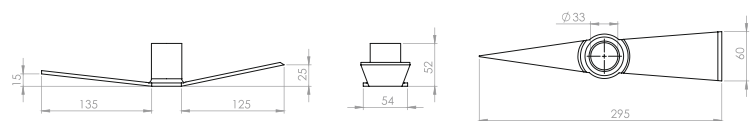
### FORKED HOE



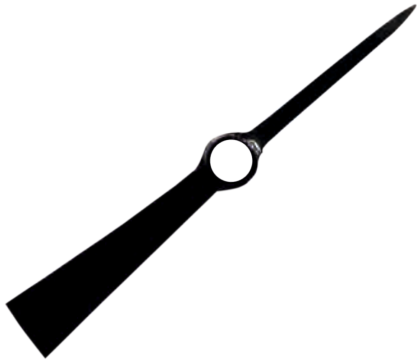
CODE	PRODUCT	MATERIAL
GA122	FORKED HOE	STEEL



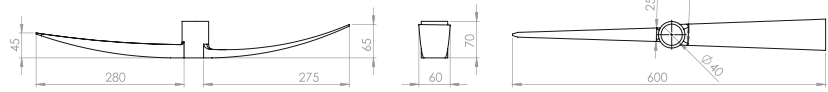
### POINTED HOE



CODE	PRODUCT	MATERIAL
GA123	POINTED HOE	STEEL



## TERRACE POINTED PICKAXE



CODE	PRODUCT	MATERIAL
GA124	TERRACE POINTED PICKAXE	STEEL-C50K



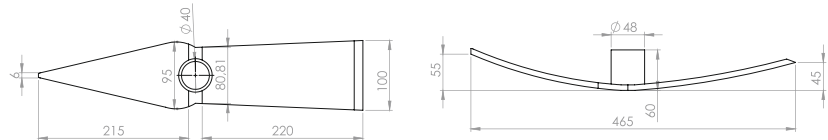
## SMALL PICKAXE



CODE	PRODUCT	MATERIAL
GA125	SMALL PICKAXE	STEEL-C50K



## FLAT TIP PICKAXE



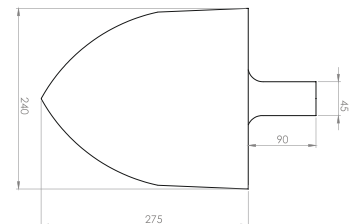
CODE	PRODUCT	MATERIAL
GA126	FLAT TIP PICKAXE	STEEL-C50K



## POINT DIGGER SHOVEL



› High quality and durable steel shovels, hardened tips with heat treated.



CODE	PRODUCT	MATERIAL
GA127	POINT DIGGER SHOVEL	STEEL

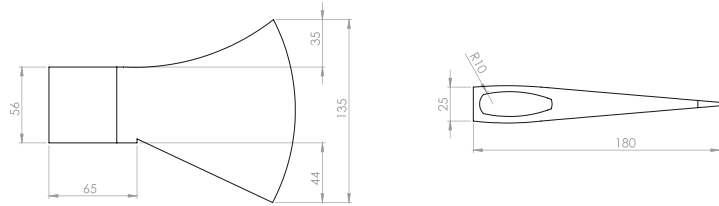


## **MINER & COALER TOOLS**





## HATCHET



### CODE

MC128

### PRODUCT

HATCHET

### MATERIAL

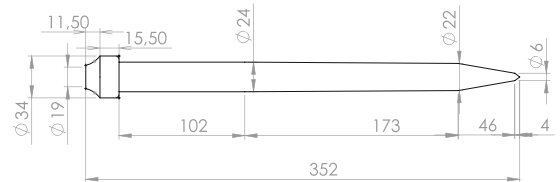
STEEL-C50K



## CHISEL FOR AIR GUNS



› Standard Chisel for pneumatic rock drill guns which is used by rock miners in underground mining.



### CODE

MC129

### PRODUCT

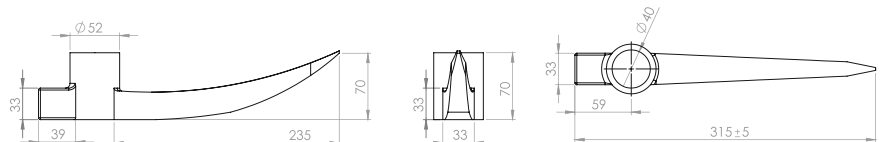
CHISEL FOR AIR GUNS

### MATERIAL

STEEL-4140



## MINERS PICKAXE



### CODE

MC130

### PRODUCT

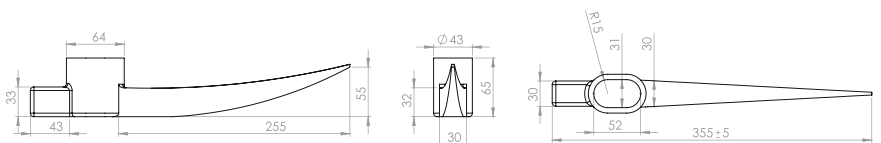
MINERS PICKAXE

### MATERIAL

STEEL-C50K



## COAL HEAVER'S PICKAXE



### CODE

MC131

### PRODUCT

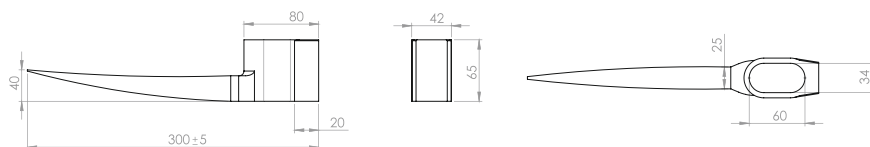
COAL HEAVER'S PICKAXE

### MATERIAL

STEEL-C50K



## COAL PICKAXE



CODE	PRODUCT	MATERIAL
MC132	COAL PICKAXE	STEEL-C50K

## SLEDGE HAMMER

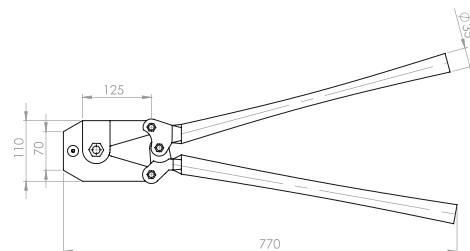


CODE	PRODUCT	WEIGHT	MATERIAL
MC133-1	SLEDGE HAMMER	3 kg	STEEL-C50K
MC133-2	SLEDGE HAMMER	4 kg	STEEL-C50K
MC133-3	SLEDGE HAMMER	5 kg	STEEL-C50K
MC133-4	SLEDGE HAMMER	6 kg	STEEL-C50K
MC133-5	SLEDGE HAMMER	7 kg	STEEL-C50K
MC133-6	SLEDGE HAMMER	8 kg	STEEL-C50K
MC133-7	SLEDGE HAMMER	9 kg	STEEL-C50K
MC133-8	SLEDGE HAMMER	10 kg	STEEL-C50K

## THIMBLE CRIMPING TOOL



- › Ferrule clamping scissors made of steel.
- › 54-58 HRC by induction cured.

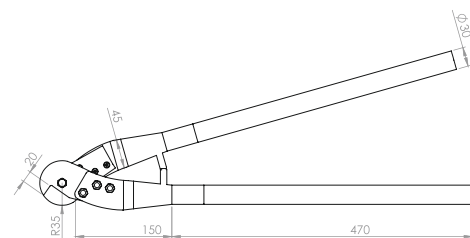


CODE	CLAMPING DIAMETER	WEIGHT	SIZE	MATERIAL
MC134	Ø 10 mm	6 kg	770 mm	STEEL-C50K

## STEEL ROPE CUTTER



- › Cutter blades scissors made of steel.
- › 54-58 HRC by induction cured.



CODE	CUTTER DIAMETER	WEIGHT	SIZE	MATERIAL
MC135	Ø 0-10 mm	3 kg	650 mm	STEEL-C50K



## GEOLOGIST HAMMER

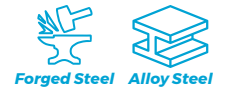


› Hammer for geologists` made by high` quality` steel.  
Heat treated and extra hardened pont` tip,` makes easier` to geological stoneworks.

CODE	PRODUCT	MATERIAL
MC136	GEOLOGIST HAMMER	STEEL-C50K



## CROWBAR FOR PAVING



CODE	PRODUCT	MATERIAL
MC137	CROWBAR FOR PAVING	STEEL-C50K



## AXHAMMER



CODE	PRODUCT	MATERIAL
MC138	AXHAMMER	STEEL-C50K



## MARBLE BLASTING NAIL



CODE	PRODUCT	MATERIAL
MC139	MARBLE BLASTING NAIL	STEEL-C50K



## FORESTRY TOOLS

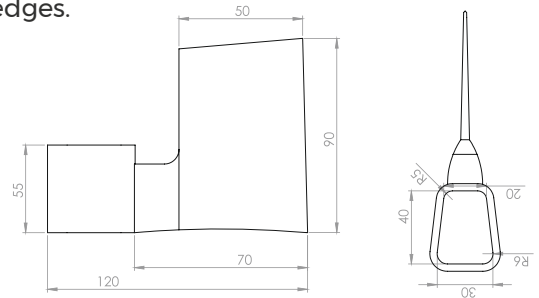




## BEARDED HAND HATCHETS



- › Heat treated and high density forged steel axe head.
- › Manual grinded blade edges.
- › Long life durable.



### CODE

FF140

### PRODUCT

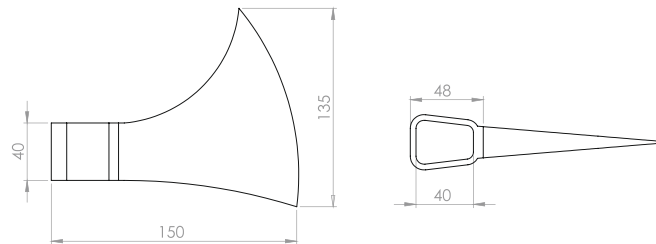
BEARDED HAND HATCHETS

### MATERIAL

STEEL-C50K



## SMALL FELLING AXE



### CODE

FF141

### PRODUCT

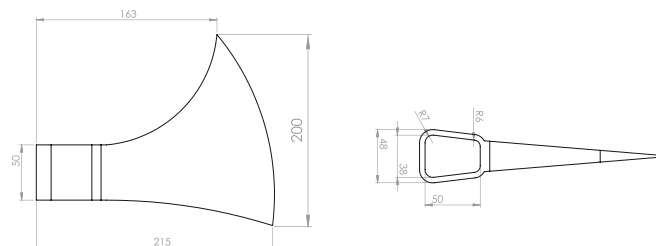
SMALL FELLING AXE

### MATERIAL

STEEL-C50K



## LARGE FELLING AXE



### CODE

FF142

### PRODUCT

LARGE FELLING AXE

### MATERIAL

STEEL-C50K



**EUROPEAN STYLE AXE**



**CODE**

FF143

**PRODUCT**

EUROPEAN STYLE AXE

**MATERIAL**

STEEL-C50K



**BUSHMAN AXE**



- › Heat treated and high density forged steel axe head.
- › Manual grinded blade edges.
- › Long life durable.

**CODE**

FF144

**PRODUCT**

BUSHMAN AXE

**MATERIAL**

STEEL-C50K



**OUTDOOR & CAMPING AXE**



- › Made from plate steel and shaped by laser clipper.
- › Forged and manual grinded blade edges.



**CODE**

FF145

**PRODUCT**

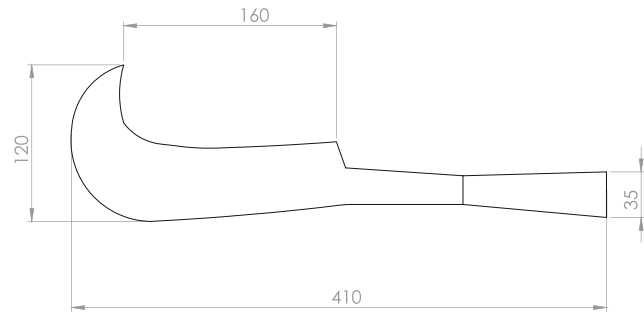
OUTDOOR & CAMPING AXE

**MATERIAL**

STEEL-C50K



## TAHRA



## CODE

FF146

## PRODUCT

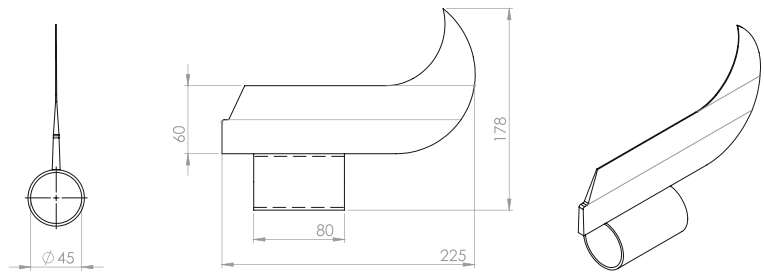
TAHRA

## MATERIAL

STEEL-C50K



## GUREBI



## CODE

FF147

## PRODUCT

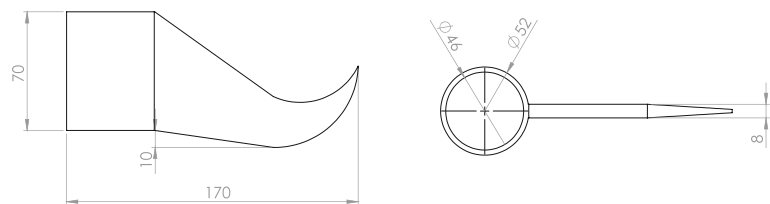
GUREBI

## MATERIAL

STEEL-C50K



## SAPPIE



## CODE

FF148

## PRODUCT

SAPPIE

## MATERIAL

STEEL-C50K

## WOOD CHISEL



CODE	PRODUCT	DIAMETER	MATERIAL
FF149-1	POINTED	Ø 40 mm	STEEL-1050
FF149-2	FLAT	Ø 40 mm	STEEL-1050

## SPLITTING WEDGE



- › The wedge s` curved to create maxmum` splitting.
- › To be used wth` a sledge or a sledge axe.



CODE	PRODUCT	MATERIAL
FF150	WEDGE	ALUMINUM

## FLIP HOOK



CODE	PRODUCT	MATERIAL
FF151	FLIP HOOK	STEEL-C50K

## MEASURE BOOK



CODE	PRODUCT	MATERIAL
FF152	MEASURE BOOK	STEEL-C50K



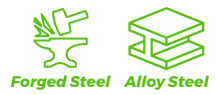
**NUMBERER**



CODE	PRODUCT	MATERIAL
FF153-1	NUMBERER	STEEL CASTING
FF153-2	NUMBERER	ALUMINUM CASTING



**LETTER SEAL FOR WOOD CLASSIFICATION**



CODE	PRODUCT	MATERIAL
FF154	LETTER SEAL FOR WOOD CLASSIFICATION	STEEL



**NUMBER SEAL FOR WOOD CLASSIFICATION**



CODE	PRODUCT	MATERIAL
FF155	NUMBER SEAL FOR WOOD CLASSIFICATION	STEEL





**CALIPER**



**CODE**

FF156

**PRODUCT**

CALIPER

**MATERIAL**

PROFILE STEEL



**LATH**



**CODE**

FF157

**PRODUCT**

LATH

**MATERIAL**

PROFILE STEEL



**BARBED WIRE & IRON FENCE**



**CODE**

FF158-1

**PRODUCT**

BARBED WIRE

**MATERIAL**

IRON

FF158-2

IRON FENCE

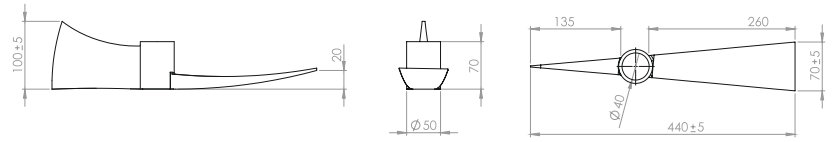
IRON



**FIREMAN TOOLS**

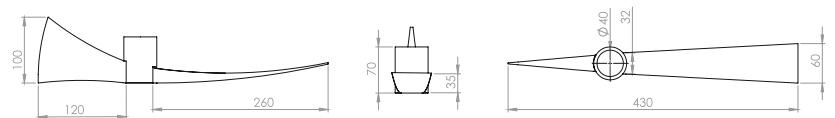


**FIREMAN AXE WITH PICKAXE**



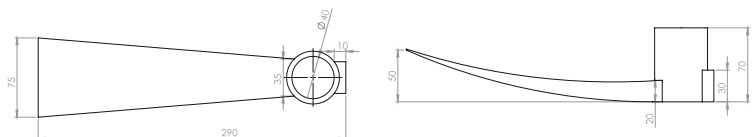
CODE	PRODUCT	MATERIAL
FM159	FIREMAN AXE WITH PICKAXE	STEEL-C50K

**LONG MATTOCK WITH PICKAXE**



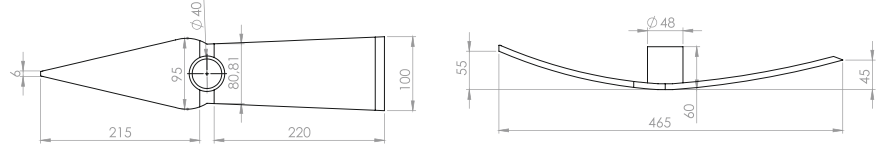
CODE	PRODUCT	MATERIAL
FM160	LONG MATTOCK WITH PICKAXE	STEEL

**PICKAXE FOR POTHOLE**



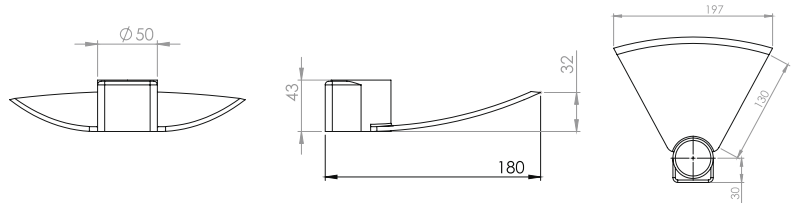
CODE	PRODUCT	MATERIAL
FM161	PICKAXE FOR POTHOLE	STEEL

**FLAT TIP PICKAXE**



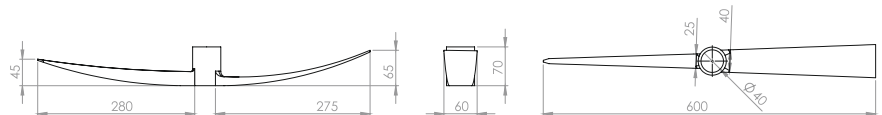
CODE	PRODUCT	MATERIAL
FM162	FLAT TIP PICKAXE	STEEL-C50K

**WIDE FIREMAN HOE**



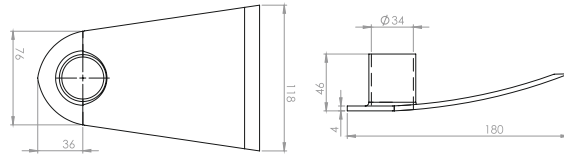
CODE	PRODUCT	MATERIAL
FM163	WIDE FIREMAN HOE	STEEL-C50K

**LONG FIREMAN PICKAXE**



CODE	PRODUCT	MATERIAL
FM164	LONG FIREMAN PICKAXE	STEEL-C50K

**FIRE HOE**

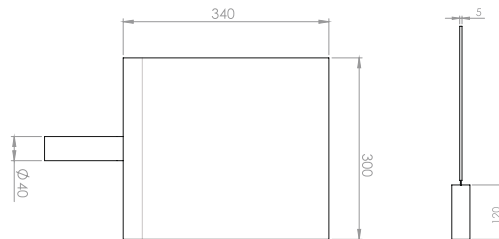


**CODE**  
FM165

**PRODUCT**  
FIRE HOE

**MATERIAL**  
STEEL-C50K

**FIRE SPANKING TOOL - RUBBER**

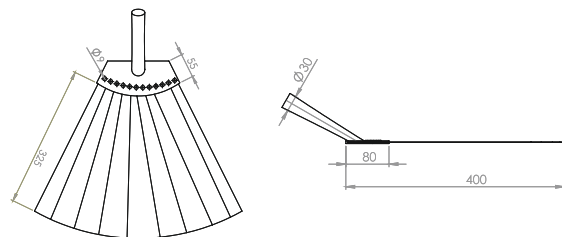


**CODE**  
FM166

**PRODUCT**  
FIRE SPANKING TOOL - RUBBER

**MATERIAL**  
RUBBER & STEEL

**FIRE SPANKING TOOL - METAL**



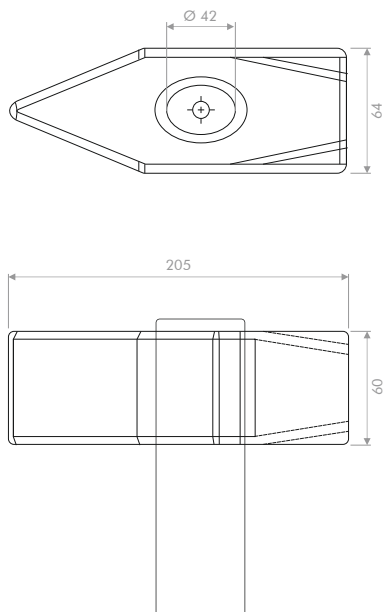
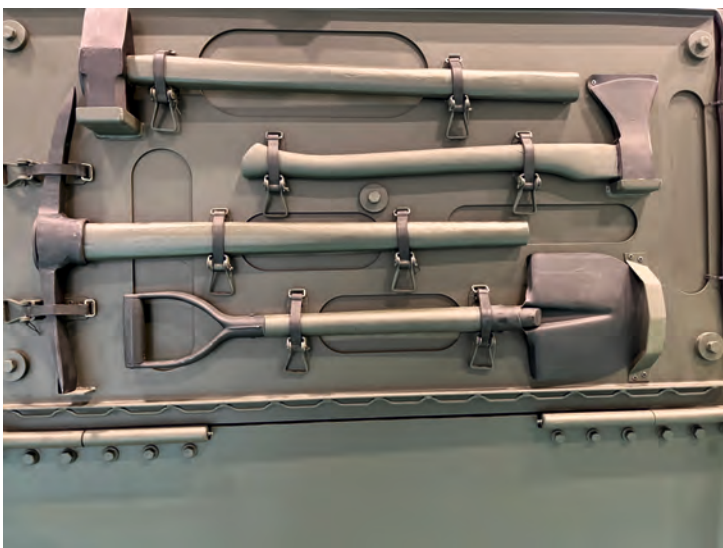
**CODE**  
FM167

**PRODUCT**  
FIRE SPANKING TOOL - METAL

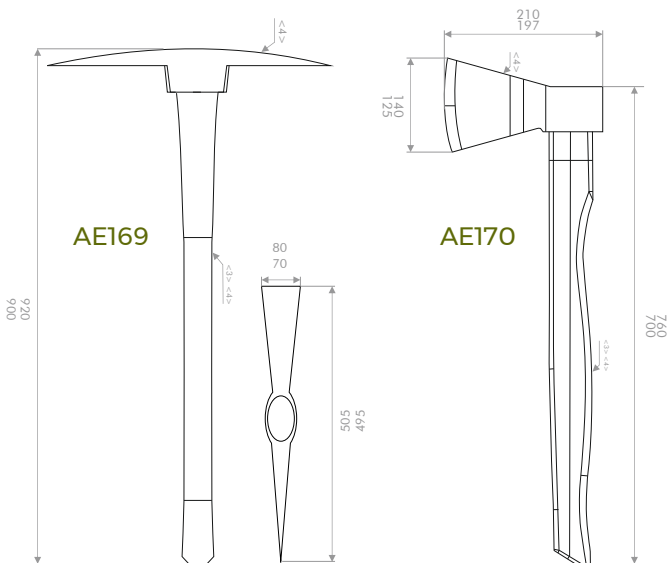
**MATERIAL**  
STEEL



**ARMORED VEHICLE  
ON BOARD EQUIPMENTS**



AE168



# HEAVY DUTY CROWBAR





*Since 1966*

## **AKİ ÇELİK SAN. TİC. LTD. ŞTİ.**

📍 Kayalar Mah. Hacıyüplü Blv. No:10  
Merkezefendi - Denizli / TÜRKİYE

☎ +90 258 371 11 30

☎ +90 258 371 78 25

✉ akicelik@akicelik.com.tr

🌐 www.akicelik.com.tr



GPS Coordinates  
37.829049, 29.048262